

New mines for a new world



Royal Road

Creating value
Making a difference

www.royalroadminerals.com

Cautionary Statement

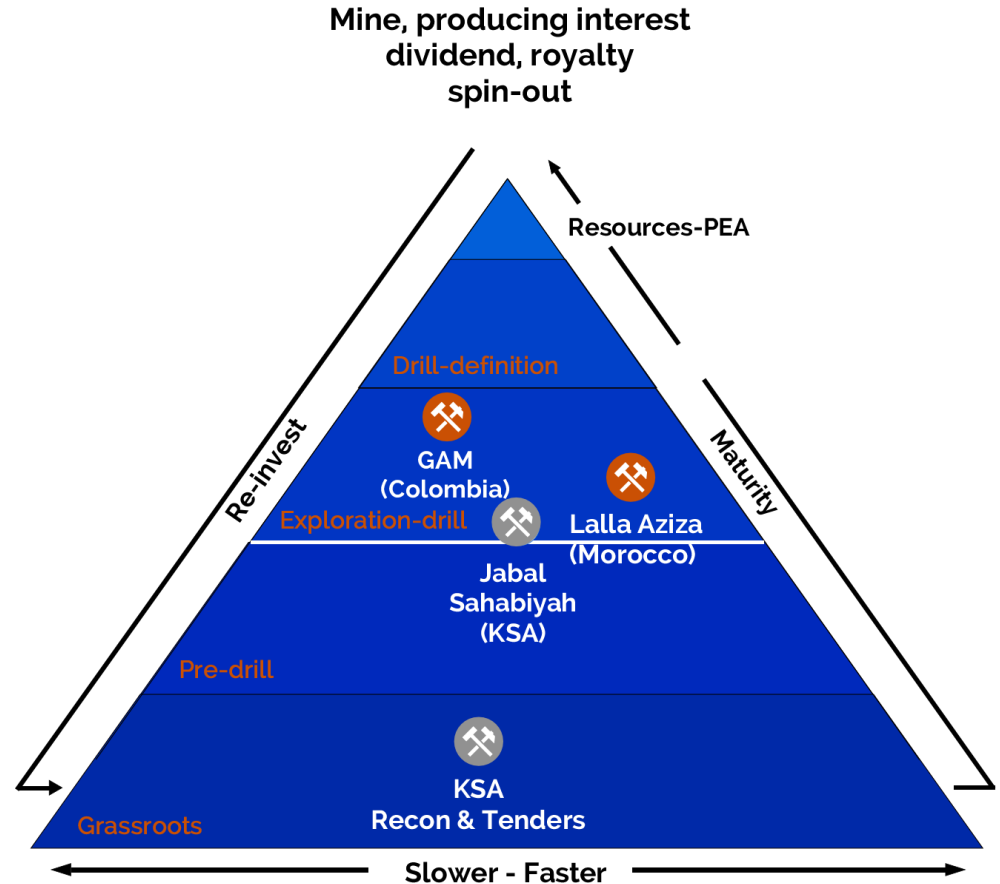
This presentation contains projections and forward-looking information about Royal Road Minerals Ltd (“Royal Road” or the “Company”) that involve various risks and uncertainties regarding future events. Such forward-looking information can include, without limitation, statements based on current expectations involving a number of risks and uncertainties and are not guarantees of future performance of the Company. These risks and uncertainties could cause actual results and the Company’s plans and objectives to differ materially from those expressed in the forward-looking information. Actual results and future events could differ materially from those anticipated in such information. These and all subsequent written and oral forward-looking information are based on estimates and opinions of management on the dates they are made and expressly qualified in their entirety by this notice.

The Company assume no obligation to update forward-looking information should circumstances or management’s estimates or opinions change. This presentation does not constitute an offer to sell or a solicitation of an offer to buy any securities of the Company within the United States or otherwise.

Our Strategy

To maximize value whilst minimizing risk by screening and advancing multiple copper and gold projects across three jurisdictions, quickly converging on one or two flagship assets per region

We aim for cash-paying interests in multiple copper and gold assets in three jurisdictions



Current Key Projects

Colombia

GAM porphyry copper-gold-silver system. Resource drilling Stage

Morocco

Lalla Aziza copper mining license on regionally extensive shear zone. Scout drilling complete



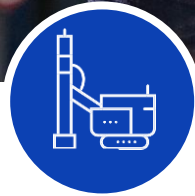
Guintar-Aleman-Margaritas (GAM)
Cu-Au-Ag



Colombia



RRM is the largest title holder in-country with over 1800 km² of combined Mining Concessions and Applications



GAM project at resource drilling stage. Nearby Margaritas drill-ready.



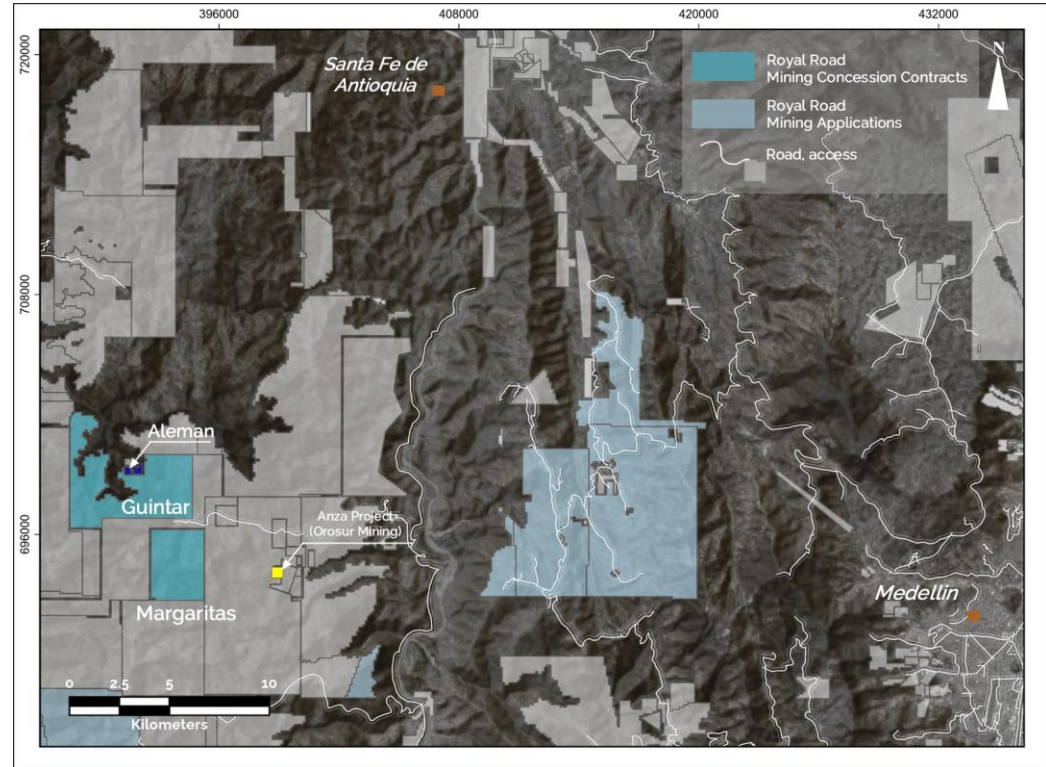
Pipeline of advanced, drill-ready and highly prospective copper-gold projects throughout the country



Scalable high-grade operating gold mines at formalization and association stage

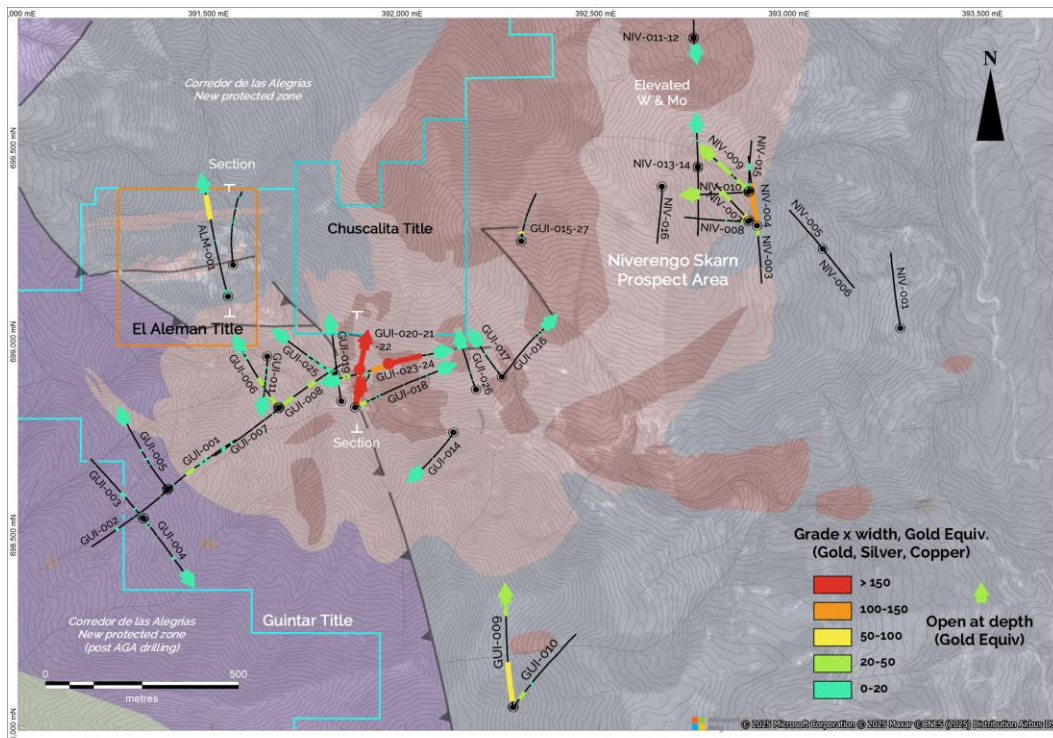
Güntar- Aleman – Margaritas (GAM)

- Gold-copper-silver porphyry-skarn and sheeted-vein gold systems with a combined surface footprint over 8km²
- 40km east of Medellin, 2 hours drive on sealed roads
- Supportive mining community with long-standing social cohesion
- Good access to infrastructure and services



Güinter- Aleman

- Airborne magnetics and radiometrics, ground magnetics, mapping and sampling completed
- 43 diamond drill holes totalling 13,700 meters. More than 50% of drill holes ended in grade
- Options to acquire neighbouring “Chuscalita” and El Aleman mining titles
- Drill campaign underway as of January 2026



- | | |
|--|---|
| Volcaniclastics and marine sedimentary rocks | Hydrothermal alteration (potassic and phyllic assemblages) quartz veins, stockworks and skarn |
| Metasedimentary rocks | Diorite, granodiorite intrusive rocks |
- Drill hole

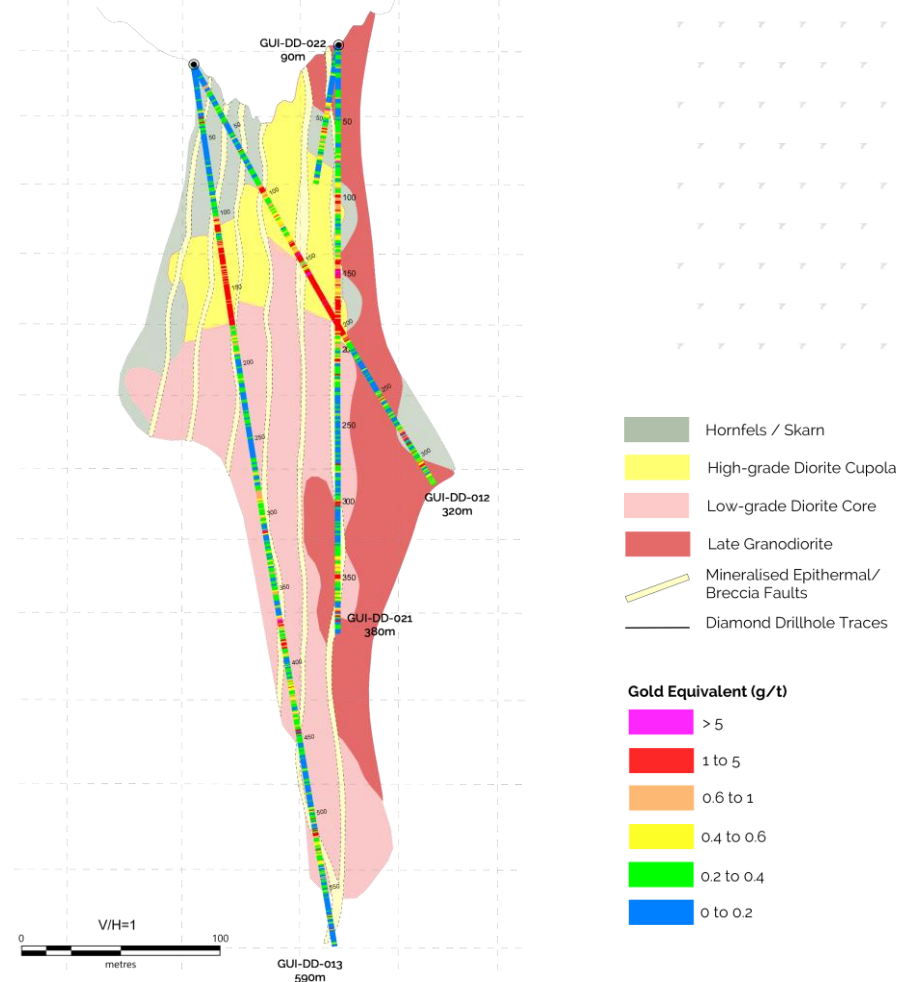
Güinter

RRM Drilling

- GUI012, 303.7 meters at 0.9 g/t gold equiv* (includes 62.0 meters at 2.1 g/t gold 12.4 ppm silver and 0.6% copper)
- GUI013, 126.0 meters at 1.1 g/t gold equiv (includes 55.0 meters at 1.5 g/t gold 10.8 ppm silver and 0.6% copper)
- GUI021, 330.0 meters at 1.1 g/t gold equiv (includes 43.0 meters at 2.4 g/t gold, 8.0 ppm silver and 0.4% copper)

SSW

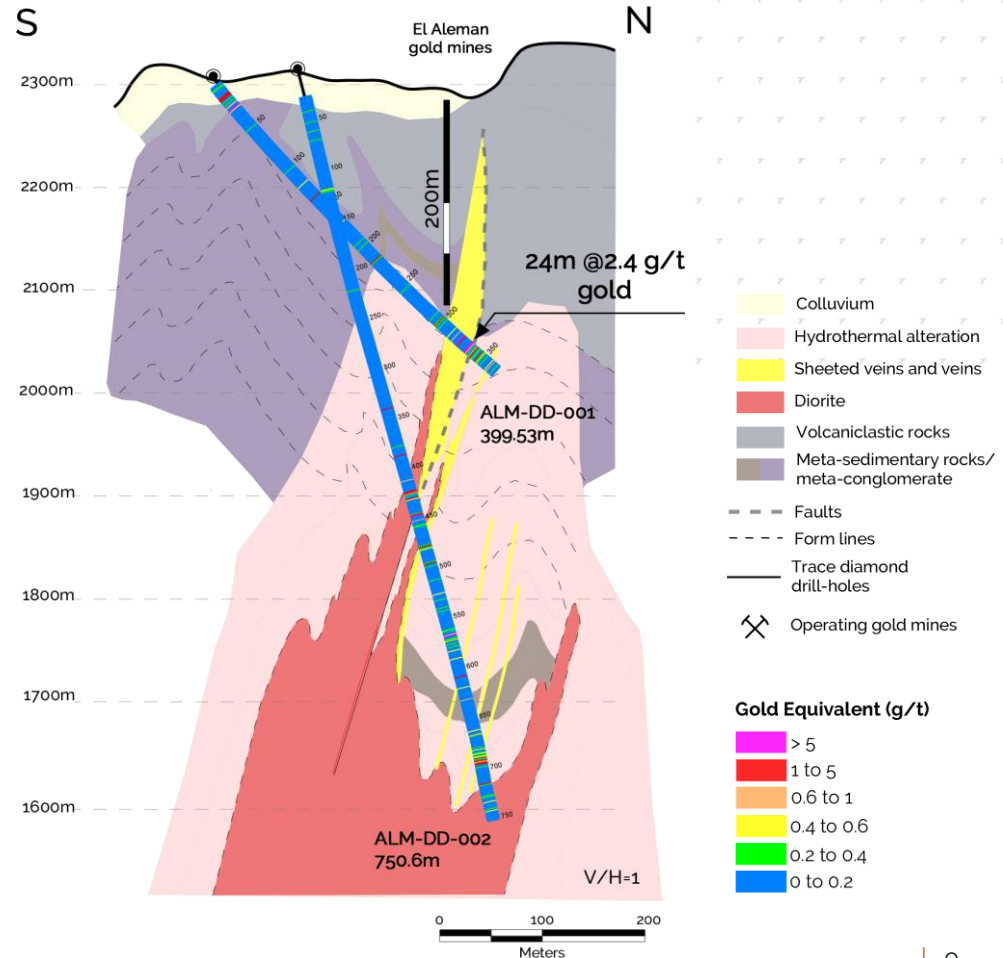
NNE



Aleman

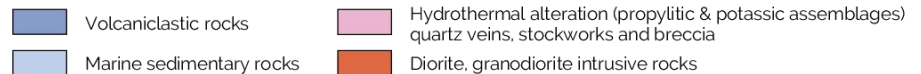
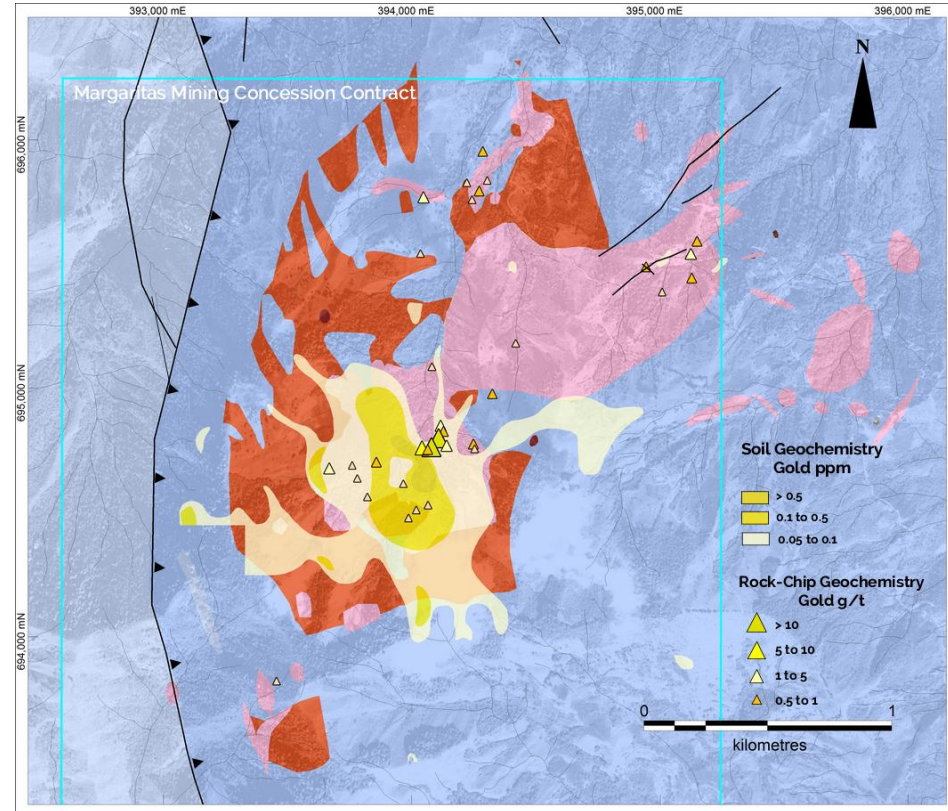
RRM Drilling

- Operating fully-titled gold mine. RRM has option to acquire 100%
- Sheeted E-W gold vein system, above, adjacent and overprinting Güntar copper-gold-silver porphyry system
- ALM-001 81 meters at 1.0 g/t gold (includes 24.0 meters at 2.4 g/t gold), 250 meters below surface operations
- ALM-002 intersected >5 meter thick zones at 400 meters below surface operations



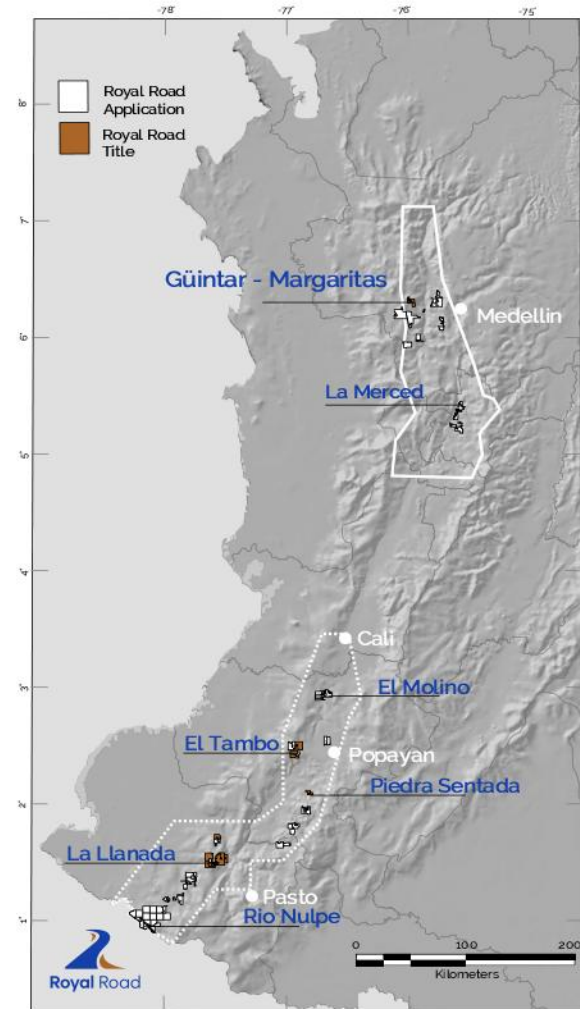
Margaritas

- Located 4km SSE of Güntar. Interpreted upper levels of porphyry copper and gold system
- Exposed breccia bodies and quartz veins have returned up to 35 g/t gold and 3,160 ppm silver. Coherent gold anomaly in soil geochemistry
- Deep magnetic high located beneath the breccias and veins interpreted as underlying quartz-magnetite target
- Drill-Ready



Largest Mining Title and Exploration Application Holder in Colombia

- During 2016 and 2017, Royal Road secured exploration applications in the porphyry copper-gold belt of southern Colombia along the border with Ecuador
- In 2019, Royal Road acquired AngloGold Ashanti's mining-titles and exploration applications
- Total property ownership is 17 mining-titles and 85 exploration applications covering 1,840 square kilometers and totalling USD \$38 million in aggregate expenditure
- Assets include the GAM porphyry-copper-gold-silver cluster, the high-grade La Llanada gold field, the EL Molino porphyry-gold system, the Rio Nulpe porphyry copper-gold belt, the Piedra-Sentada porphyry copper district and the El Tambo vein-gold district



Nariño and Cauca

La Llanada Goldfield

- 194 Km² of titles
- Covering several intrusion-related (shallow-vein) high-grade gold-systems
- Underground sampling average 30g/t gold



El Molino

- 73 Km² of applications
- Covering extensive sheeted vein high-grade intrusion-related gold systems
- Completed heliborne mag, radiometrics, LIDAR



Rio Nulpe

- 540km² of applications
- Covering known porphyry copper and gold occurrences
- Northern extension of porphyry belt hosting Cascabel in Ecuador



Morocco

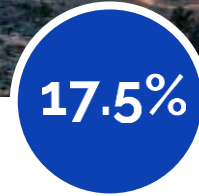
Poised to become a major global copper producer with the application of new exploration and mining technologies. Mining law overhauled in 2016



Copper producer since Phoenician times. World class geological potential



Mining law modernized and overhauled in 2016



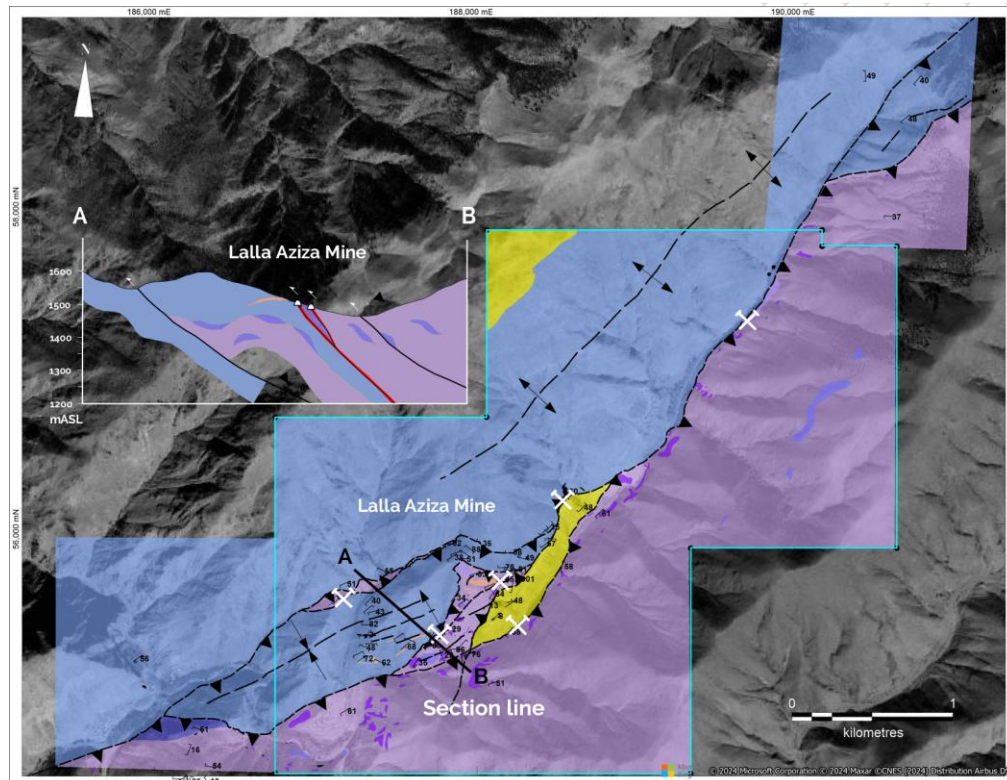
Corporate tax, no royalty, no withholding tax on mine exports



Regional tax on extracted ton's (max ~\$0.3/ton).

Lalla Aziza

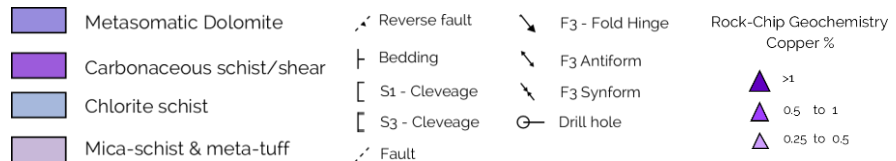
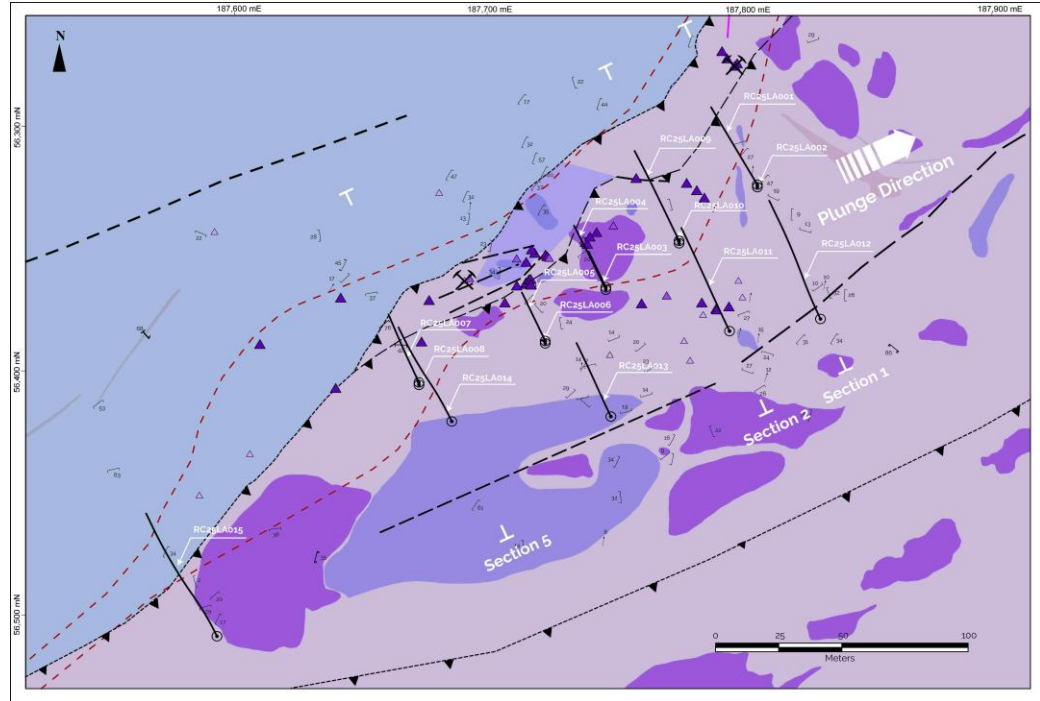
- Copper mining license
- Hosted in regional-scale reverse shear zone
- Sulphide ore extracted from moderate-dipping, shear-hosted dolomite vein-stockworks and breccia up to 20 meters wide
- Royal Road drilling has highlighted on-surface and northeast plunging subsurface potential
- Royal Road has exercised its option to acquire the Lalla Aziza Mining License. License re-assignment process underway



Lalla Aziza

RRM Drilling

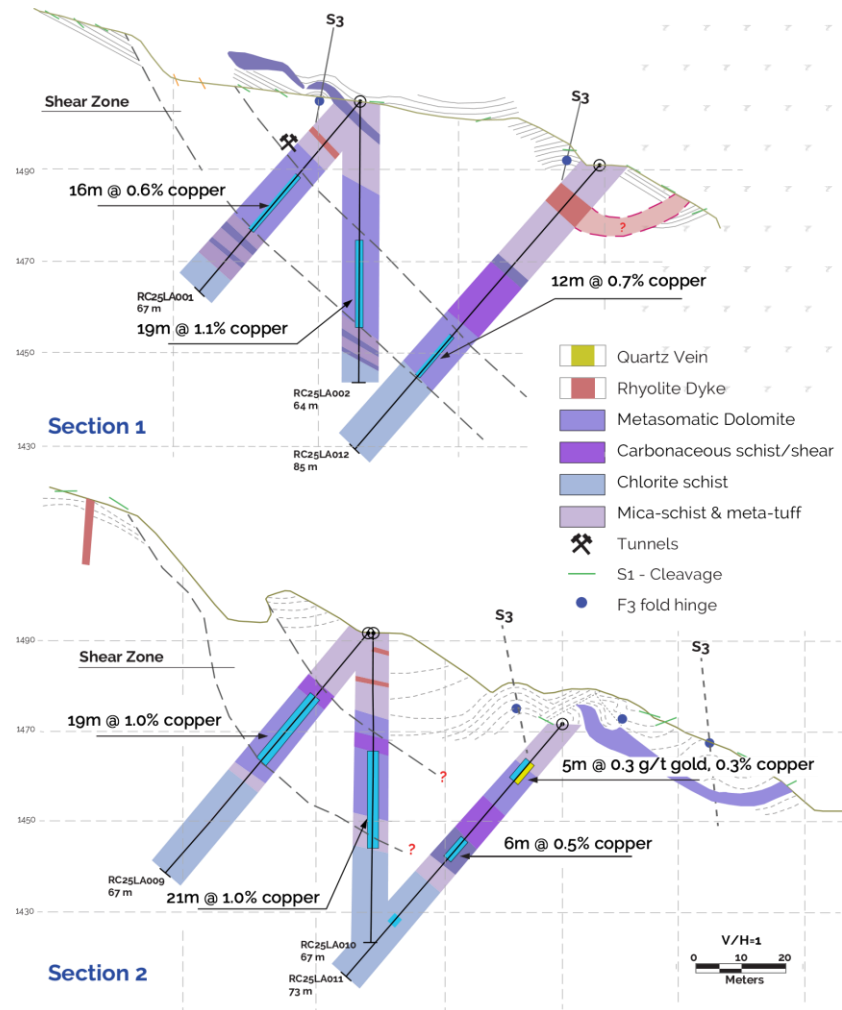
- 15-hole, 1000m reverse circulation scout drilling campaign
- Aimed to test thickness and down-plunge continuity beneath current workings
 - RC25LA002 - 19m at 1.1% copper
 - RC25LA004 - 17m at 1.3% copper
 - RC25LA005 - 17m at 1.1% copper (EOH)
 - RC25LA007 - 31m 0.7% copper
 - RC25LA009 - 19m 1.0% copper
 - RC25LA010 - 21m at 1.0% copper
 - RC25LA012 - 12 m at 0.7% copper



Lalla Aziza

RRM Drilling

- 20-meter-wide shear zone dips southeasterly
- Mineralization likely related to shallow northeast plunging duplex-style folds on the shear zone
- Metasomatic dolomite and then copper mineralization is emplaced into the fold-duplex structures
- Section 1 is the most northeast section and is the most coherent down-dip, supporting northeast plunge and extensions



Royal Road Arabia

50-50 partnership with MIDU Company Limited, a Saudi Arabian investment holding company with interests across various sectors including mining, industrial, real estate development, & utilities



Royal Road
Arabia

www.royalroadminerals.com

Current Projects

Jabal Sahabiyah

- Sheeted gold veins
- Gold and Silver –Zinc Skarns

Jabal al Musamah

- Intrusion-related gold

Al Neqrah

- Skarn gold



KSA: Vision 2030

The Kingdom of Saudi Arabia has embarked on an ambitious initiative of economic and social reform, it is using its investment power to create a more diverse and sustainable economy. The country wishes to increase non-oil GDP from 16% to 50% and the mining sector is seen as a key component of this goal



Transparent and accessible National Geologic Database. Streamlined modern licensing process



\$200M exploration incentive fund established allowing refunds for exploration expenses up to \$2M per license



75%
...of mine initial capital costs available as development funding up to \$800M

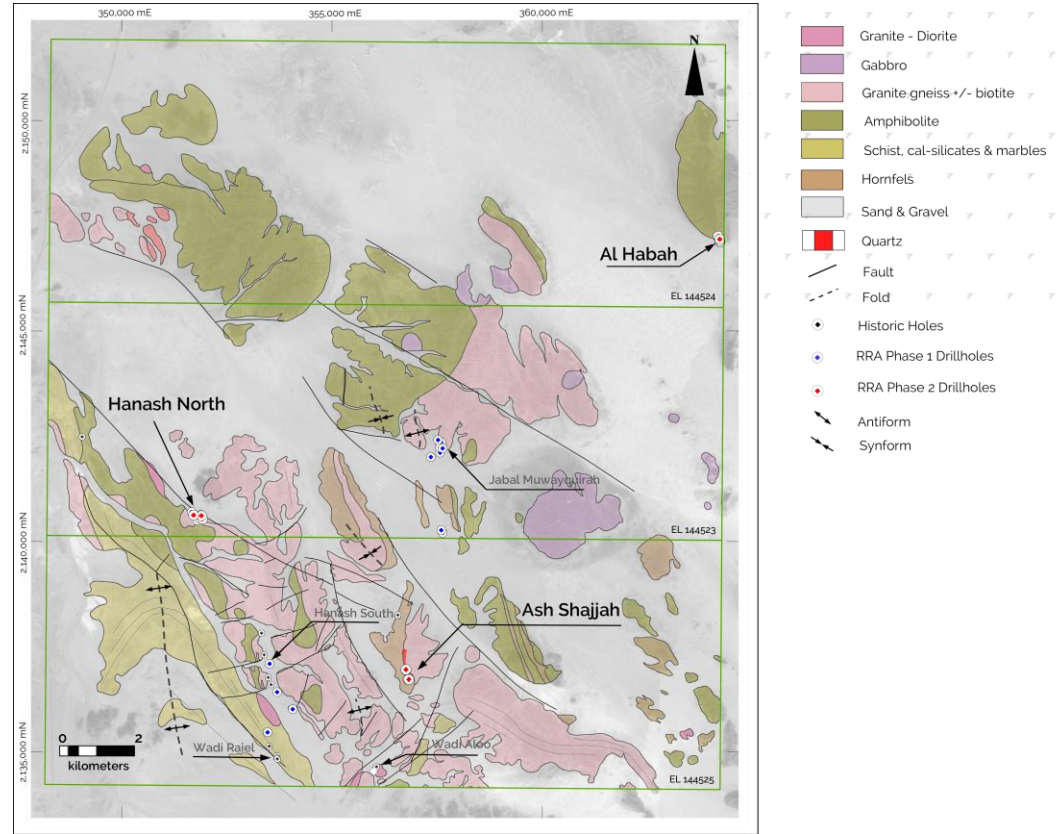


2% royalty for copper. Five years royalty grace period for new mines, up to 90% discount on royalties for local sales

Jabal Sahabiyah

RRA drilling

- RRA has completed 4000 meters of reverse circulation and RAB-style drilling in two campaigns
- 23 RC drill holes targeted zinc ± gold ± silver skarns at Jabal Muwayqirah, Hanash North and Hanash South
- 15 RC drill holes targeted vein gold mineralization at Wadi Raiel, Ash Shajjah and Al Habah
- 52 short (3-8 meters depth) RAB style holes drilled on 3 lines
- Results for campaign 2 awaited





Skarn-style intercepts (Received to-date)

Jabal Muwayqirah

- JMRC001, 11 meters at 12.3% zinc, or 3.3 g/t gold equiv*
- JMRC006, 15 meters at 1.4 g/t gold, or 1.5% copper equiv

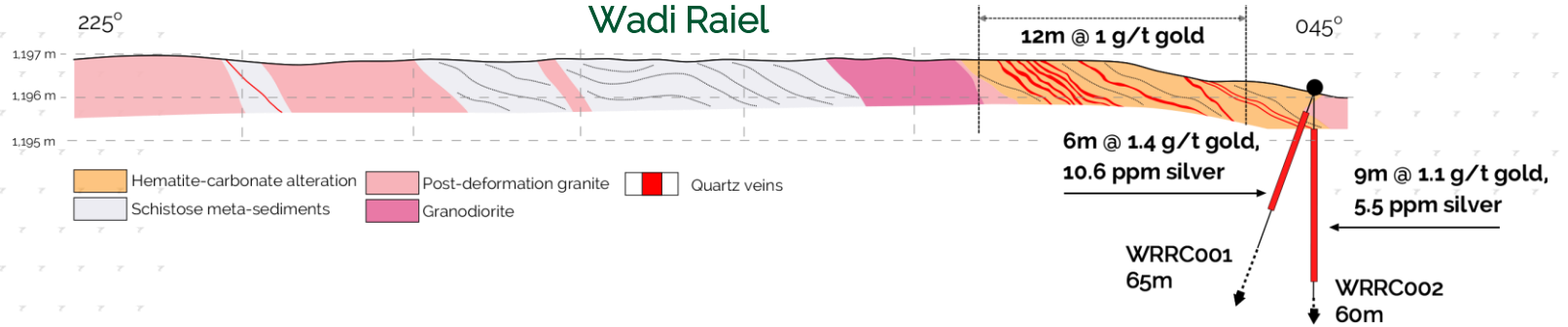
Hanash North

- HNRC003, 12 meters at 3.5% zinc, or 90.1 ppm silver equiv
- HNRC004, 7 meters at 4.5% zinc, or 113.7 ppm silver equiv

Hanash North intercepts are entirely sulphide and open down dip and along-strike

Vein gold systems

RRA Drilling



At-least four separate sheeted gold-vein systems of strike lengths up to three kilometers and average aggregate 10-meter widths



Experienced & Skill-Relevant Board



Tim Coughlin (CEO)
BSc, MSc, PhD, FAusIMM
Exploration, Finance



Jon Hill (Chair)
BSc (Hons), BAppSci,
FAusIMM
Exploration, Mining



**Sarah Armstrong-
Montoya**
BA, LLB
Law Commercial



Hugh Devlin
MA, Princez
Security, Operations



Roderick Corrie
BA, MA (Cambridge)
Finance



Marcus Stone
LLB (Hons)
Law, Governance



Guy Wallis
MSc, FSI, CSP
Security, Geopolitics

Special Advisory Board



Share structure and ownership

RIO

15%



MACKENZIE
Investments

8%

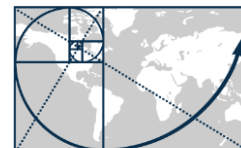
Shares outstanding – 294M

Employee incentive options - 14M

Sprott | Global Resource
Investments Ltd.



PHOENIX
GOLD FUND



U.S. Global Investors

canada **life**



BANCA
CREDINVEST





RoyalRoad

TORONTO STOCK
EXCHANGE



BÖRSE
FRANKFURT

OTCQB

Contact our Jersey Office
5 Seale Street
St Helier,
Jersey,
JE2 3QG

T: +44 (0) 1534 887 166

E: info@royalroadminerals.com

Follow us on

