



Royal Road

Following the Geology
Not the Crowd



TSXV: RYR, OTCQB: RRD MF, FSE: RLU

www.royalroadminerals.com

Cautionary Statement

This presentation contains projections and forward-looking information about Royal Road Minerals Ltd ("Royal Road" or the "Company") that involve various risks and uncertainties regarding future events. Such forward-looking information can include, without limitation, statements based on current expectations involving a number of risks and uncertainties and are not guarantees of future performance of the Company. These risks and uncertainties could cause actual results and the Company's plans and objectives to differ materially from those expressed in the forward-looking information. Actual results and future events could differ materially from those anticipated in such information. These and all subsequent written and oral forward-looking information are based on estimates and opinions of management on the dates they are made and expressly qualified in their entirety by this notice.

The Company assume no obligation to update forward-looking information should circumstances or management's estimates or opinions change. This presentation does not constitute an offer to sell or a solicitation of an offer to buy any securities of the Company within the United States or otherwise.

Why Invest in Royal Road?



A Proven Team

Technical Excellence.
Experienced. Disciplined.
Reliable



Discovery Unfolding

Drilling a large-scale gold-
copper-silver system –
expanding the discovery



High-Value Pipeline

Large curated license package in
Colombia. Multiple drill-ready targets



Shareholder Alignment

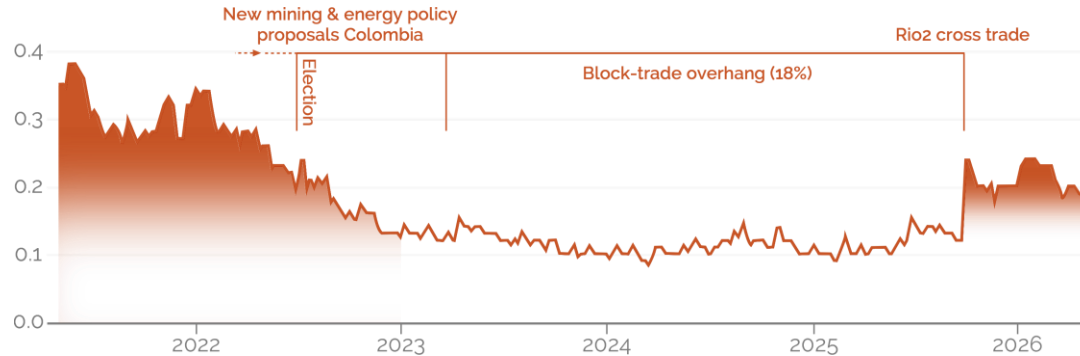
~70% insider & institutional
ownership



Commodity Discipline

Copper & Gold. Scale, liquidity &
demand

Corporate snapshot






- 📈 Shares Outstanding – 294M
- 📈 Employee incentive options – 14M
- 📈 Market Capitalization – 58M



Colombia

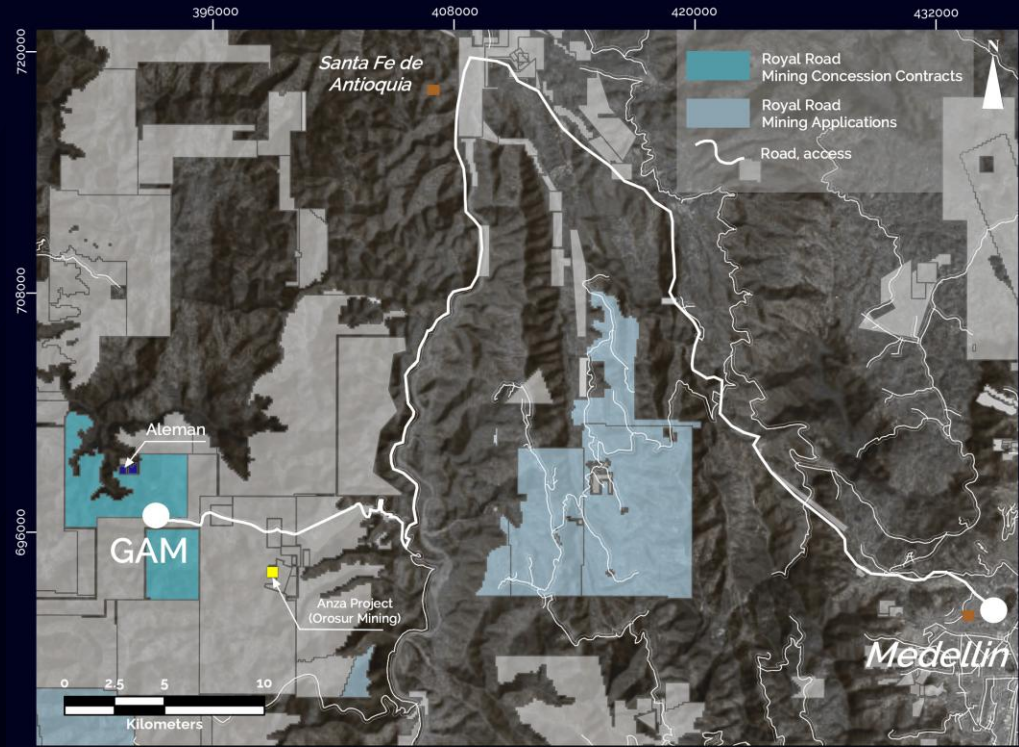


New Discovery Immediate Pipeline

-  > 1800 km² of Mining Titles & Applications
-  GAM project at scale definition stage
-  Established presence, recognized stewardship



GAM Project: Defining a District



Mineralization

Gold-Copper-Silver System
Porphyry • Skarn • CBM Veins



Location

40 km West of Medellín
Sealed road access



Exploration Progress

49 Drill Holes
16,000 Meters Drilled



Ownership & Discovery

100% Acquired & Owned or 100% available under Option

GAM-Drill Highlights



GUI-012: **215m @ 1 g/t Au or, 1.2% Cu-Eq.**
 (incl. **75.2m @ 1.9 g/t Au, 10.8 g/t Ag & 0.6% Cu**)
 AND 54.50m @ 0.6 g/t Au or, 0.7% Cu-Eq.



GUI-013: **131m @ 1 g/t Au or, 1.3% Cu-Eq.**
 (incl. **57m @ 1.4 g/t Au, 10.2 g/t Ag & 0.6% Cu**)
 AND 185.5m @ 0.6 g/t Au Eq.
 (incl. 17.5m @ 2.2 g/t Au & 3.8 g/t Ag)



GUI-020: **418m @ 0.6 g/t Au or, 0.7% Cu-Eq.**
 (incl. **41m @ 1.2 g/t Au, 6.2 g/t Ag & 0.3% Cu**)
OPEN AT DEPTH



GUI-021: **181m @ 1.0 g/t Au or, 1.2% Cu-Eq.**
 (incl. **49m @ 2.2 g/t Au, 7.6 g/t Ag & 0.4% Cu**)
OPEN AT DEPTH



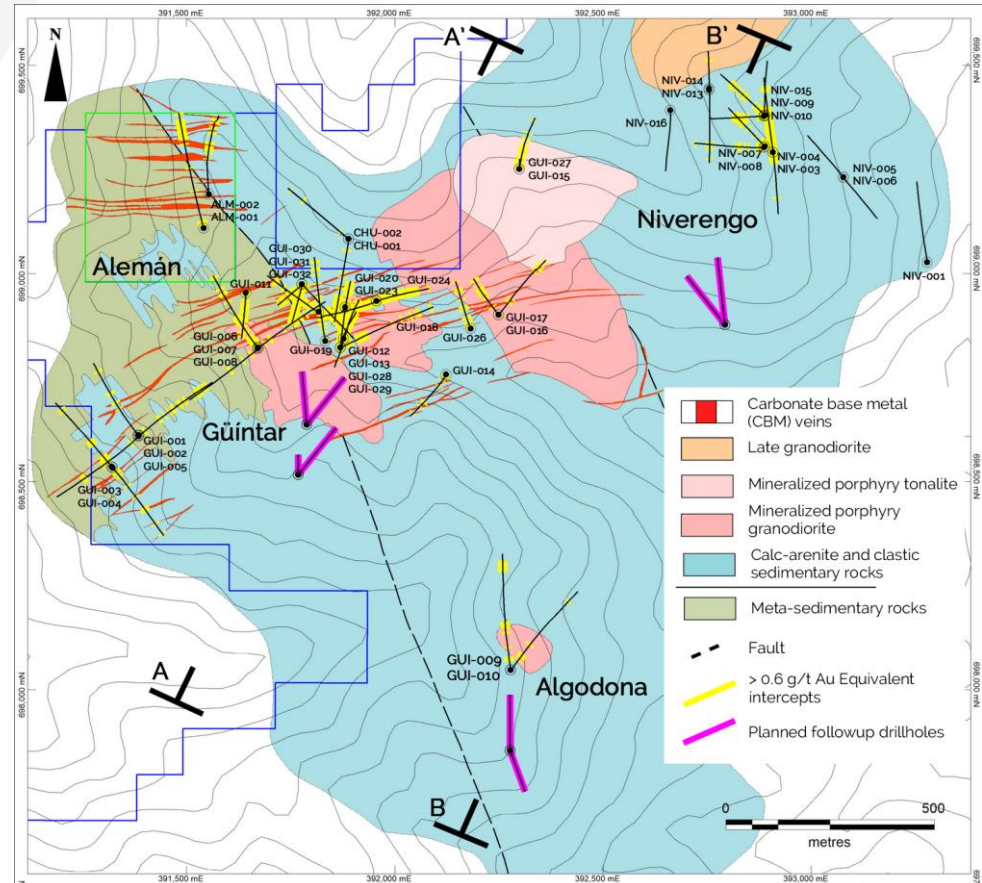
GUI-028: **176m @ 1.2 g/t Au or, 1.4% Cu-Eq.**
 (incl. **76m @ 2.1 g/t Au, 7.9 g/t Ag & 0.4% Cu**)
OPEN AT DEPTH



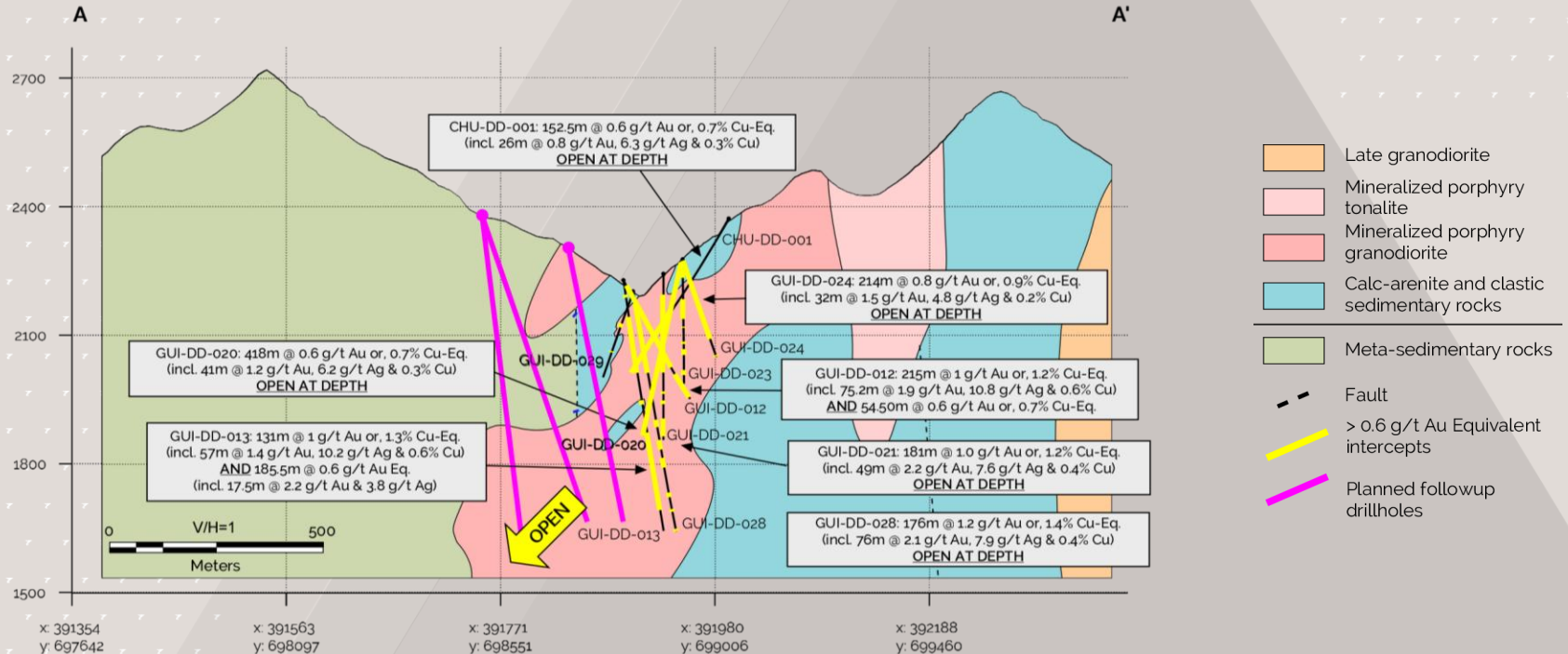
ALM-001: **65m @ 1.1 g/t Au**
 (incl. **24m @ 2.4 g/t Au, 2.7 g/t Ag**)



NIV-004: **174m @ 0.8 g/t Au**
 (incl. **46m @ 1.2 g/t Au, 2.3 g/t Ag**)

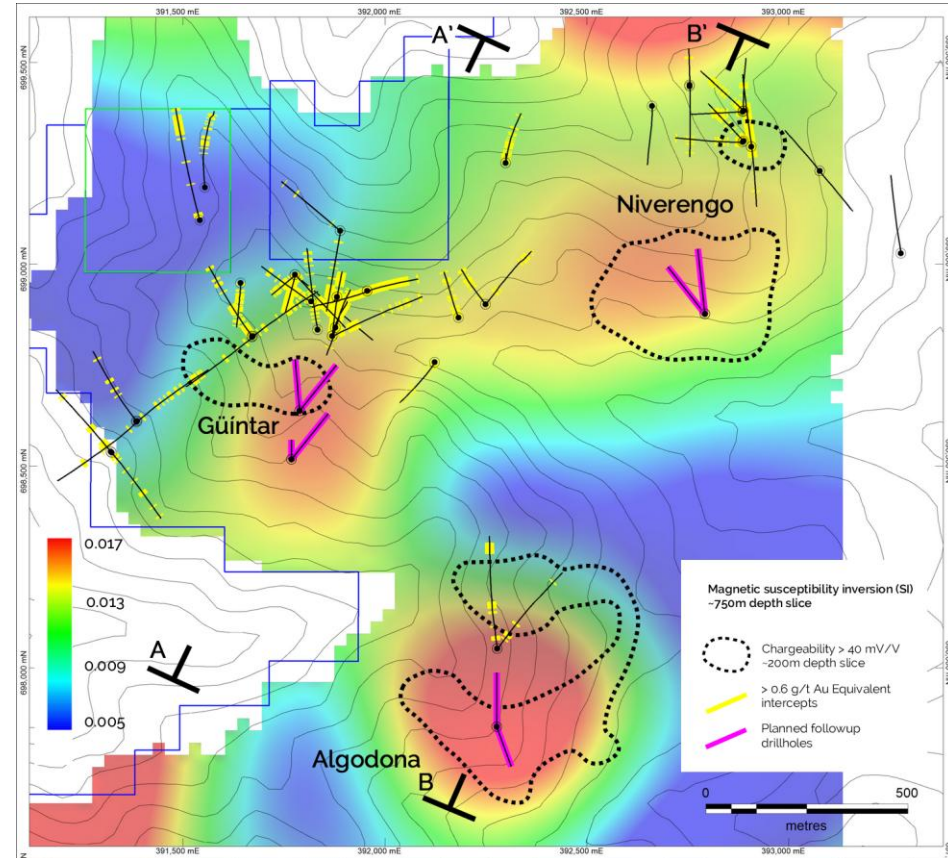


Güinter Porphyry – Open at Depth

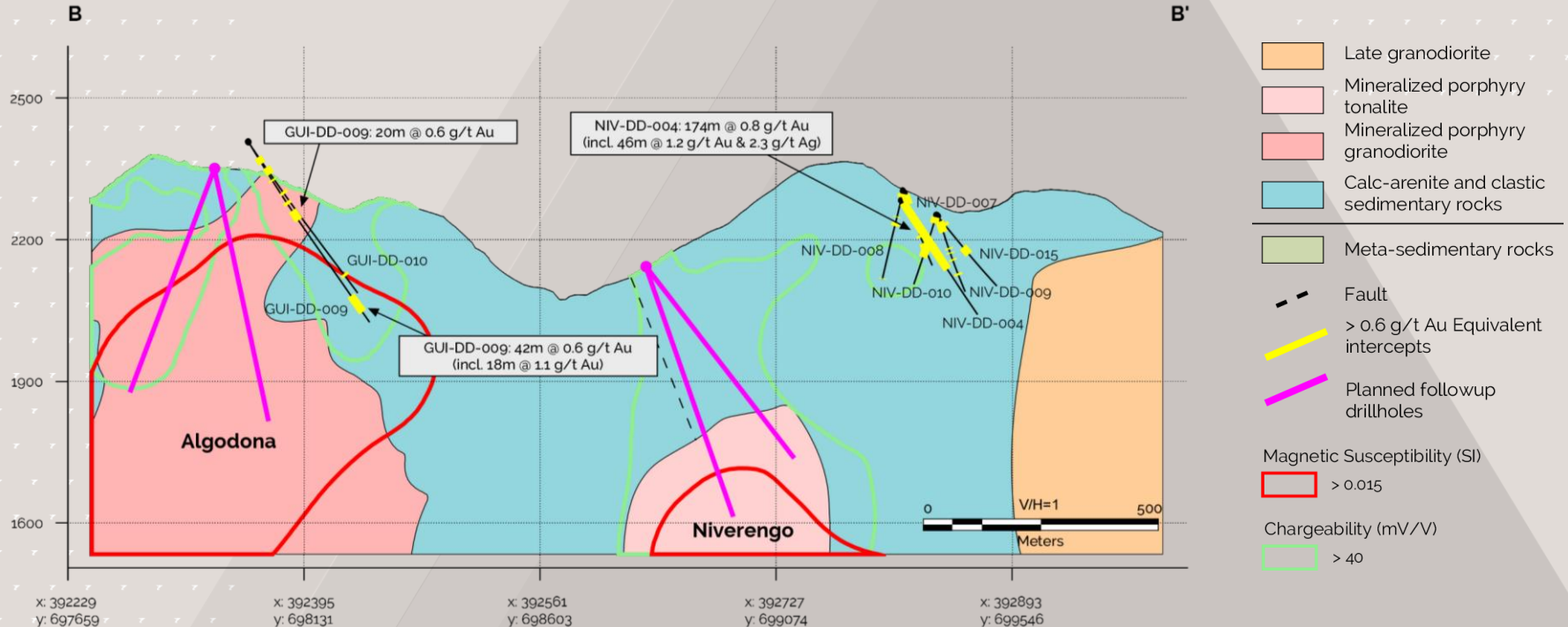


GAM-Porphyry Cluster

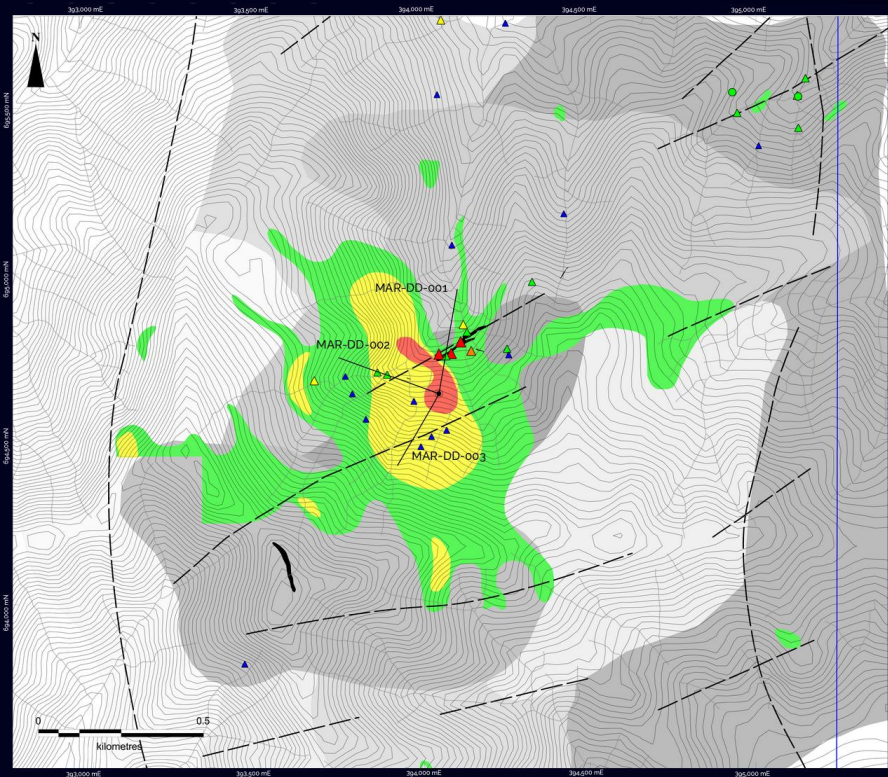
- Targets exhibit the same magnetic signature as the Güntar porphyry
- Coincident with anomalous gold-copper in surface geochemistry samples
- District-scale potential emerging, evidence for a porphyry cluster within license



Clear Drill Objectives






Margaritas in the Making






-  Carbonate base metal (CBM) veins
-  Gabbro
-  Late granodiorite
-  Granodiorite
-  Calc-arenite and clastic sedimentary rocks
-  Tholeiitic basalt
-  Basaltic andesite
-  Mafic volcaniclastics
-  Fault

Rock - Chip Geochemistry
Gold (g/t)

-  > 5
-  2 to 5
-  1 to 2
-  0.5 to 1
-  0.25 to 0.5

Soil Geochemistry
Gold (g/t)




-  > 0.5
-  0.25 to 0.5
-  0.1 to 0.25

Stream Sediment Geochemistry
Gold (ppb)

-  > 500
-  200 to 500
-  100 to 200
-  50 to 100

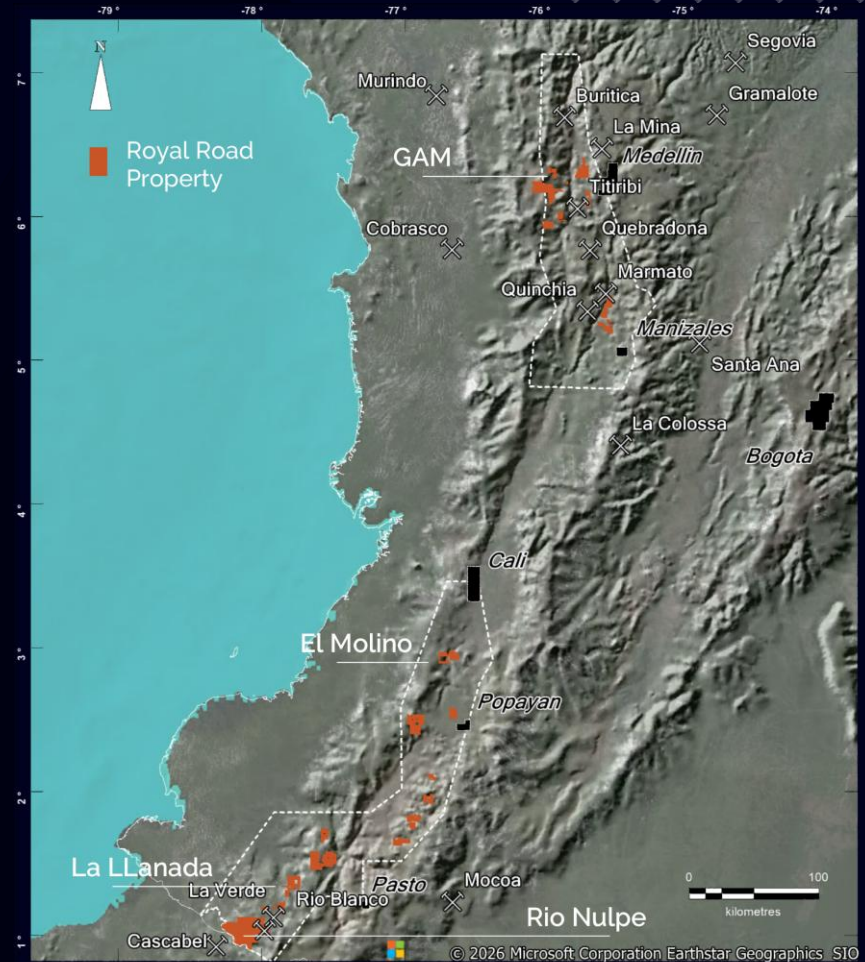


Key Highlights

-  Upper levels of porphyry gold-copper system
-  Tourmaline breccia bodies & CBM veins – 35 g/t Au & 3,160ppm Ag in rock-chips
-  Maiden exploratory drilling underway

Curated, High-Quality Portfolio

- 17 mining titles, 85 exploration applications, totaling 1840km²
- Acquired AngloGold Ashanti's Colombian subsidiary, including full portfolio in 2019 (~\$34M prior spend)
- Claimed Rio Nulpe porphyry copper district



Pipeline Highlights



La Llanada Goldfield

- 194 Km² of titles
- Covering several intrusion-related high-grade gold-systems
- Underground sampling average 30g/t gold



Rio Nulpe

- 540km² of applications
- Covering known porphyry copper & gold occurrences
- Northern extension of Eocene porphyry belt hosting Cascabel in Ecuador



El Molino

- 73 Km² of applications
- Covering extensive sheeted vein high-grade intrusion-related gold systems
- Completed heliborne mag, radiometrics, LIDAR

Morocco



Consolidation



Exploratory drilling defined scalable copper potential (1% Cu over 20m intervals)



Consolidation of highly prospective extensive (+10km) shear zone underway



Government rapidly modernizing the mining regulatory system

Saudi Arabia



Low-Cost Optionality



50-50 incorporated JV with MIDU Ltd. Exploration reimbursements to \$2M/license



Drilling defined sheeted gold vein & zinc precious metal skarn systems



Competitive edge in regional targeting & reconnaissance

A Proven Team



Tim Coughlin (CEO)

BSc, MSc, PhD,
FAusIMM
Exploration, Finance

- 35+ years in global exploration
- 25 jurisdictions
- 25 years experience in Colombia
- 20 years capital markets
- Proven Tier 1 track record - 1 Tier 1, 2 mid-tier discoveries



Jon Hill (Chair)

BSc (Hons), BAppSci,
FAusIMM
Exploration, Mining

- 35+ years in exploration & mining
- Africa and South America
- Proven track record - advancing projects from discovery to development



Sarah Armstrong-Montoya

BA, LLB
Law Commercial

- 15+ years global experience in mining
- Current CEO of Cordoba Minerals
- Specialist in permitting & in-country operations in Colombia



Roderick Corrie

BA, MA (Cambridge)
Finance



Marcus Stone

LLB (Hons)
Law, Governance

Special Advisory Board



Guy Wallis

MSc, FSI, CSP
Security, Geopolitics



Hugh Devlin

MA, Prince2
Security, Operations



Royal Road



TSXV: RYR, OTCQB: RRD MF, FSE: RLU

Contact our Jersey Office
5 Seale Street
St Helier, Jersey, JE2 3QG

T: +44 (0) 1534 887 166

E: info@royalroadminerals.com

Follow us on

