



**Royal** Road

---

Following the Geology  
Not the Crowd



TSXV: RYR, OTCQB: RRD MF, FSE: RLU

[www.royalroadminerals.com](http://www.royalroadminerals.com)

# Cautionary Statement

---

This presentation contains projections and forward-looking information about Royal Road Minerals Ltd ("Royal Road" or the "Company") that involve various risks and uncertainties regarding future events. Such forward-looking information can include, without limitation, statements based on current expectations involving a number of risks and uncertainties and are not guarantees of future performance of the Company. These risks and uncertainties could cause actual results and the Company's plans and objectives to differ materially from those expressed in the forward-looking information. Actual results and future events could differ materially from those anticipated in such information. These and all subsequent written and oral forward-looking information are based on estimates and opinions of management on the dates they are made and expressly qualified in their entirety by this notice.

The Company assume no obligation to update forward-looking information should circumstances or management's estimates or opinions change. This presentation does not constitute an offer to sell or a solicitation of an offer to buy any securities of the Company within the United States or otherwise.

# Why Invest in Royal Road?



## A Proven Team

Technical Excellence.  
Experienced. Disciplined.  
Reliable



## Discovery Unfolding

Drilling a large-scale gold-  
copper-silver system –  
expanding the discovery



## High-Value Pipeline

Large curated license package in  
Colombia. Multiple drill-ready targets



## Shareholder Alignment

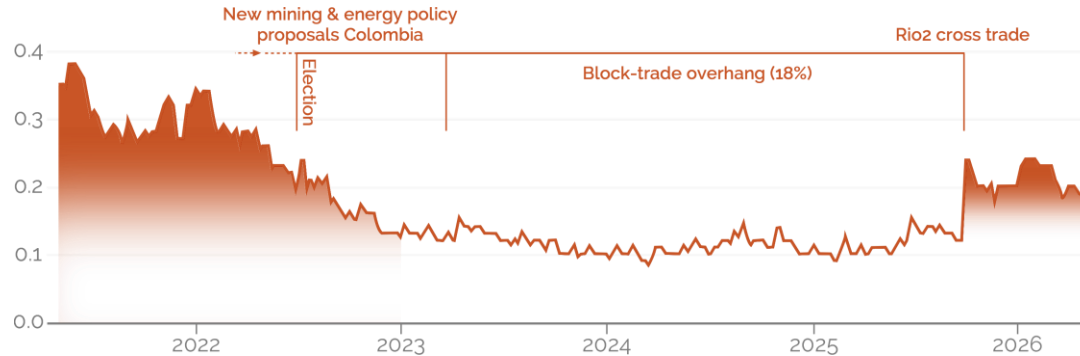
~70% insider & institutional  
ownership



## Commodity Discipline

Copper & Gold. Scale, liquidity &  
demand

# Corporate snapshot



- 📈 Shares Outstanding – 294M
- 📈 Employee incentive options – 14M
- 📈 Market Capitalization – 58M






# Colombia

---

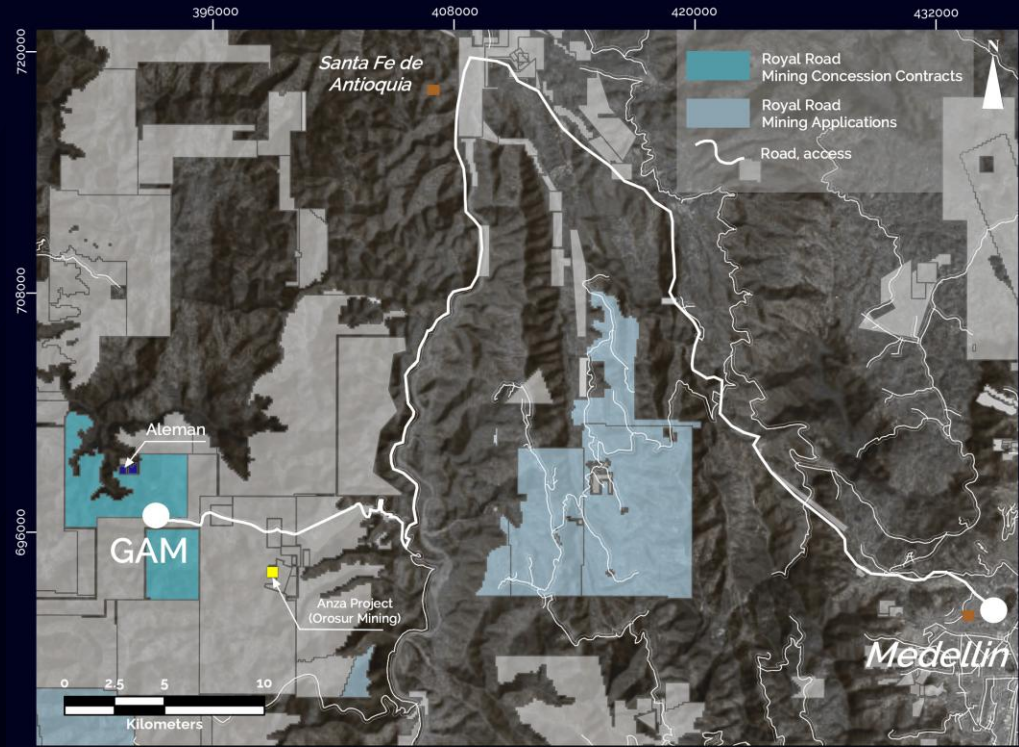


## New Discovery Immediate Pipeline

-  > 1800 km<sup>2</sup> of Mining Titles & Applications
-  GAM project at scale definition stage
-  Established presence, recognized stewardship



# GAM Project: Defining a District



## Mineralization

Gold-Copper-Silver System  
Porphyry • Skarn • CBM Veins



## Location

50 km west of Medellin  
Sealed road access



## Exploration Progress

52 Drill Holes  
17,000 Meters Drilled



## Ownership & Discovery

100% Acquired & Owned or 100% available under Option

# GAM-Drill Highlights



GUI-012: **215m @ 1 g/t Au or, 1.2% Cu-Eq.**  
 (incl. **75.2m @ 1.9 g/t Au, 10.8 g/t Ag & 0.6% Cu**)  
 AND 54.50m @ 0.6 g/t Au or, 0.7% Cu-Eq.



GUI-013: **131m @ 1 g/t Au or, 1.3% Cu-Eq.**  
 (incl. **57m @ 1.4 g/t Au, 10.2 g/t Ag & 0.6% Cu**)  
 AND 185.5m @ 0.6 g/t Au Eq.  
 (incl. 17.5m @ 2.2 g/t Au & 3.8 g/t Ag)



GUI-020: **418m @ 0.6 g/t Au or, 0.7% Cu-Eq.**  
 (incl. **41m @ 1.2 g/t Au, 6.2 g/t Ag & 0.3% Cu**)  
OPEN AT DEPTH



GUI-021: **181m @ 1.0 g/t Au or, 1.2% Cu-Eq.**  
 (incl. **49m @ 2.2 g/t Au, 7.6 g/t Ag & 0.4% Cu**)  
OPEN AT DEPTH



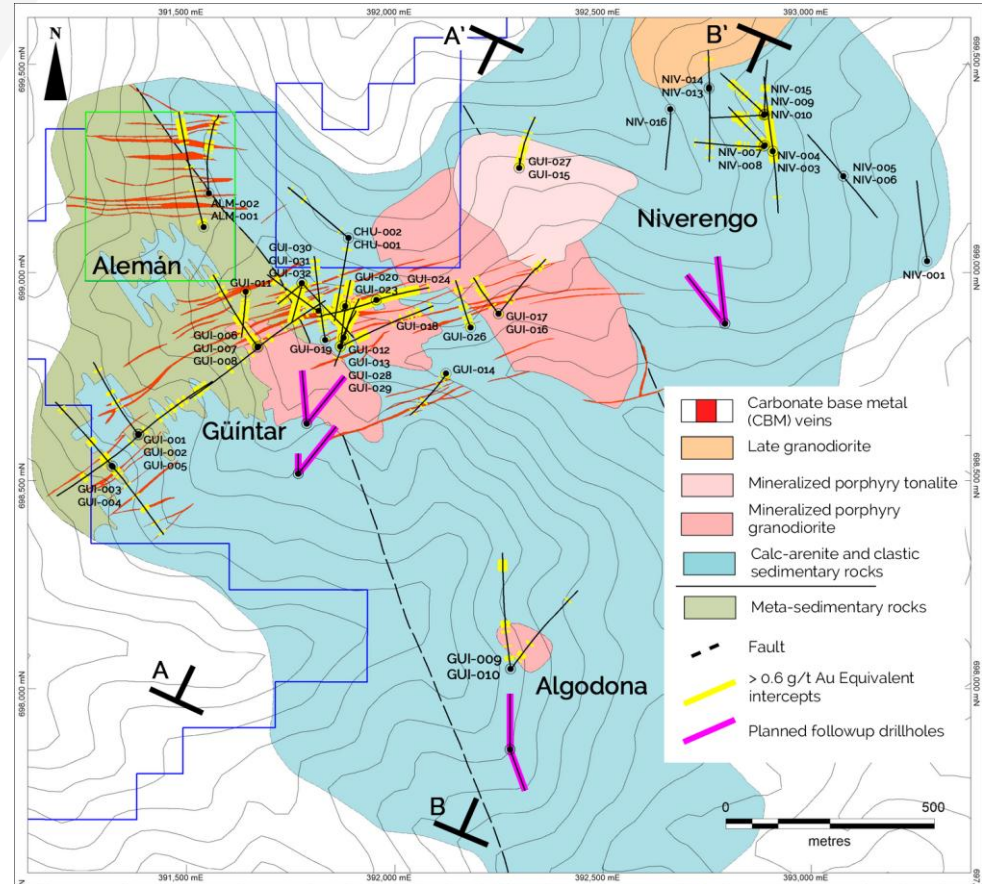
GUI-028: **176m @ 1.2 g/t Au or, 1.4% Cu-Eq.**  
 (incl. **76m @ 2.1 g/t Au, 7.9 g/t Ag & 0.4% Cu**)  
OPEN AT DEPTH



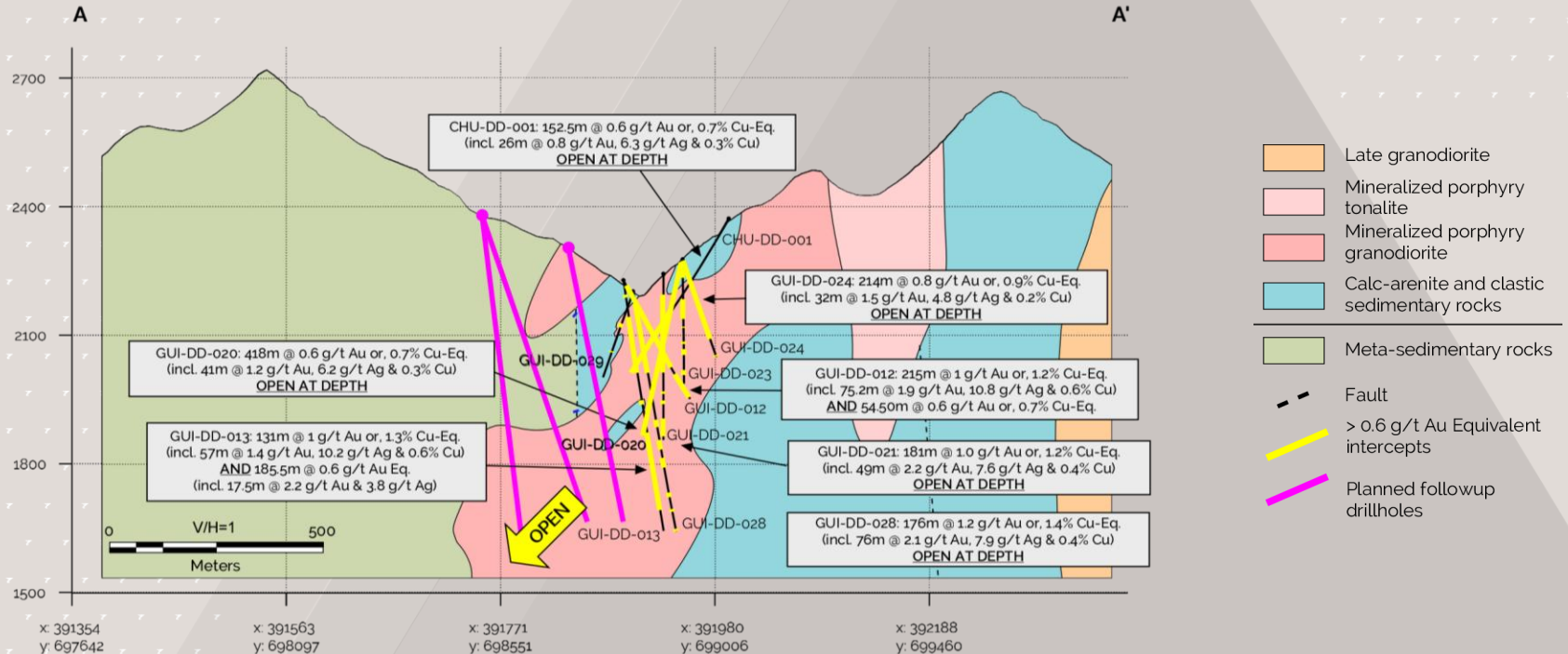
ALM-001: **65m @ 1.1 g/t Au**  
 (incl. **24m @ 2.4 g/t Au, 2.7 g/t Ag**)



NIV-004: **174m @ 0.8 g/t Au**  
 (incl. **46m @ 1.2 g/t Au, 2.3 g/t Ag**)

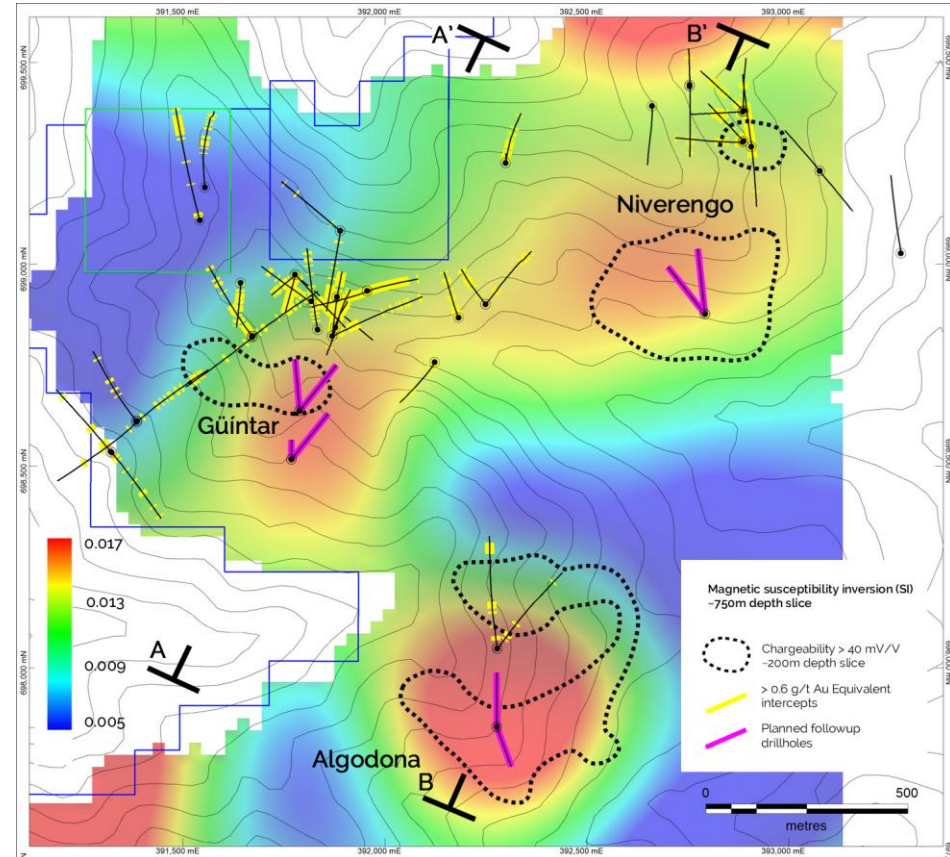


# Güinter Porphyry – Open at Depth

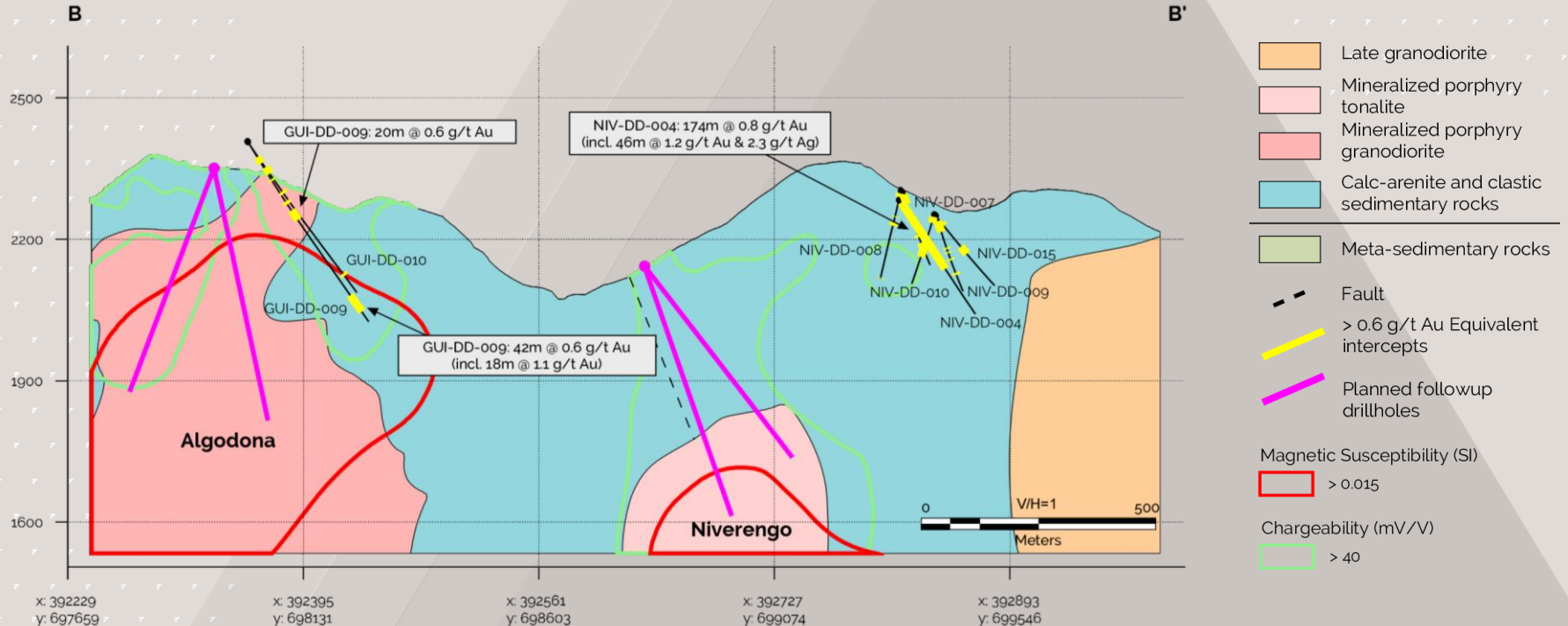


# GAM-Porphyry Cluster

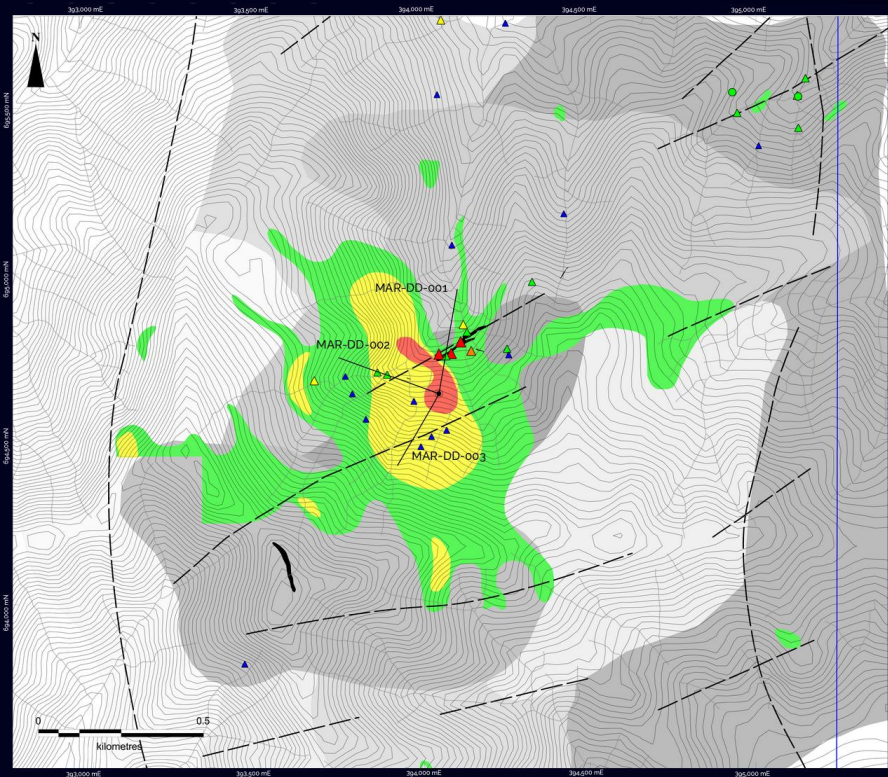
- Targets exhibit the same magnetic signature as the Güntar porphyry
- Coincident with anomalous gold-copper in surface geochemistry samples
- District-scale potential emerging, evidence for a porphyry cluster within license



# Clear Drill Objectives



# Margaritas in the Making



-  Carbonate base metal (CBM) veins
-  Gabbro
-  Late granodiorite
-  Granodiorite
-  Calc-arenite and clastic sedimentary rocks
-  Tholeiitic basalt
-  Basaltic andesite
-  Mafic volcanoclastics
-  Fault

**Rock - Chip Geochemistry**  
Gold (g/t)

-  > 5
-  2 to 5
-  1 to 2
-  0.5 to 1
-  0.25 to 0.5

**Soil Geochemistry**  
Gold (g/t)




-  > 0.5
-  0.25 to 0.5
-  0.1 to 0.25

**Stream Sediment Geochemistry**  
Gold (ppb)

-  > 500
-  200 to 500
-  100 to 200
-  50 to 100

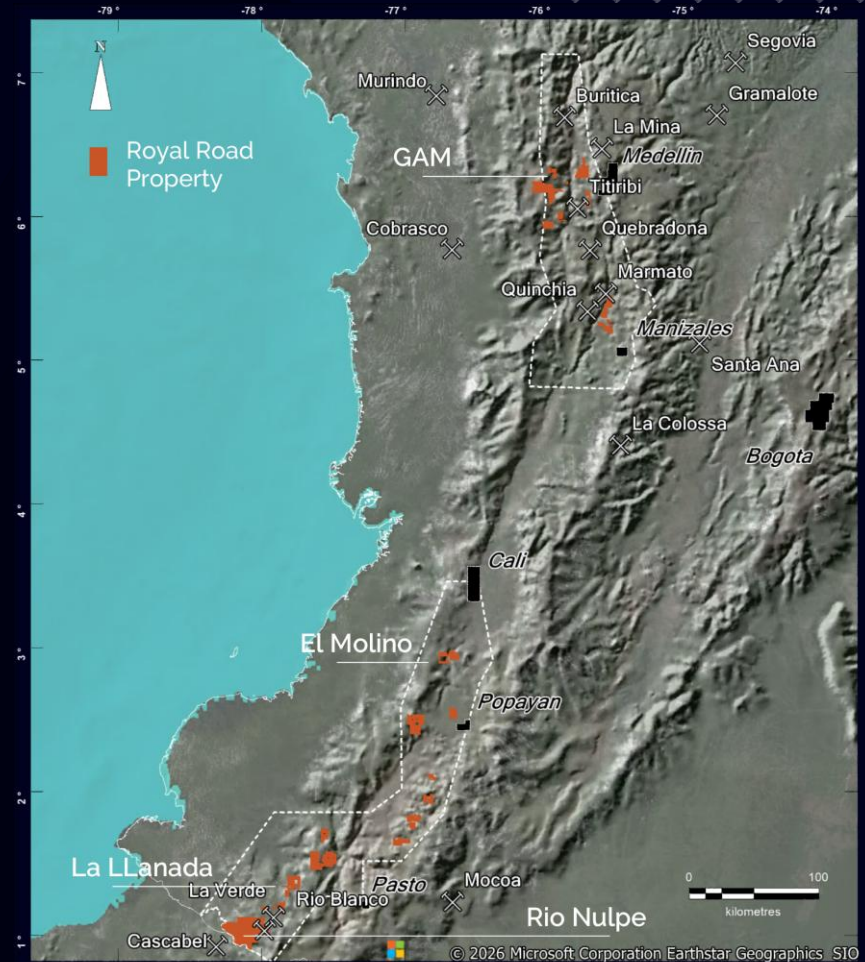


## Key Highlights

-  Upper levels of porphyry gold-copper system
-  Tourmaline breccia bodies & CBM veins – 35 g/t Au & 3,160ppm Ag in rock-chips
-  Maiden exploratory drilling underway

# Curated, High-Quality Portfolio

- 17 mining titles, 85 exploration applications, totaling 1840km<sup>2</sup>
- Acquired AngloGold Ashanti's Colombian subsidiary, including full portfolio in 2019 (~\$34M prior spend)
- Claimed Rio Nulpe porphyry copper district



# Pipeline Highlights



## La Llanada Goldfield

- 194 Km<sup>2</sup> of titles
- Covering several intrusion-related high-grade gold-systems
- Underground sampling average 30g/t gold



## Rio Nulpe

- 540km<sup>2</sup> of applications
- Covering known porphyry copper & gold occurrences
- Northern extension of Eocene porphyry belt hosting Cascabel in Ecuador



## El Molino

- 73 Km<sup>2</sup> of applications
- Covering extensive sheeted vein high-grade intrusion-related gold systems
- Completed heliborne mag, radiometrics, LIDAR

# Morocco



## Consolidation



Exploratory drilling defined scalable copper potential (1% Cu over 20m intervals)



Consolidation of highly prospective extensive (+10km) shear zone underway



Government rapidly modernizing the mining regulatory system

# Saudi Arabia



## Low-Cost Optionality



50-50 incorporated JV with MIDU Ltd. Exploration reimbursements to \$2M/license



Drilling defined sheeted gold vein & zinc precious metal skarn systems



Competitive edge in regional targeting & reconnaissance

# A Proven Team



**Tim Coughlin (CEO)**

BSc, MSc, PhD,  
FAusIMM  
Exploration, Finance

- 35+ years in global exploration
- 25 jurisdictions
- 25 years experience in Colombia
- 20 years capital markets
- Proven Tier 1 track record - 1 Tier 1, 2 mid-tier discoveries



**Jon Hill (Chair)**

BSc (Hons), BAppSci,  
FAusIMM  
Exploration, Mining

- 35+ years in exploration & mining
- Africa and South America
- Proven track record - advancing projects from discovery to development



**Sarah Armstrong-Montoya**

BA, LLB  
Law Commercial

- 15+ years global experience in mining
- Current CEO of Cordoba Minerals
- Specialist in permitting & in-country operations in Colombia



**Roderick Corrie**

BA, MA (Cambridge)  
Finance



**Marcus Stone**

LLB (Hons)  
Law, Governance

## Special Advisory Board



**Guy Wallis**

MSc, FSI, CSP  
Security, Geopolitics



**Hugh Devlin**

MA, Prince2  
Security, Operations



# Royal Road

---



TSXV: RYR, OTCQB: RRD MF, FSE: RLU

Contact our Jersey Office  
5 Seale Street  
St Helier, Jersey, JE2 3QG

T: +44 (0) 1534 887 166

E: [info@royalroadminerals.com](mailto:info@royalroadminerals.com)

Follow us on

